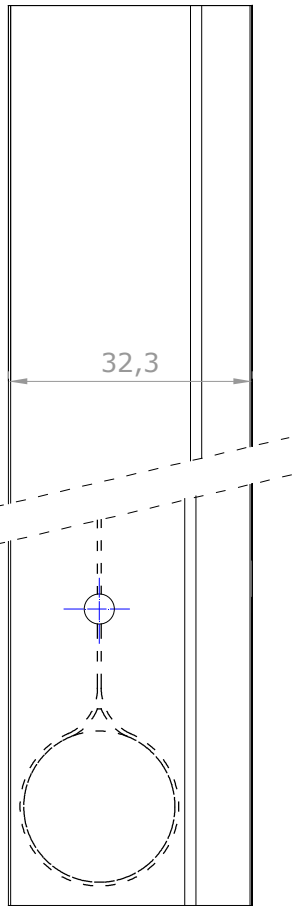
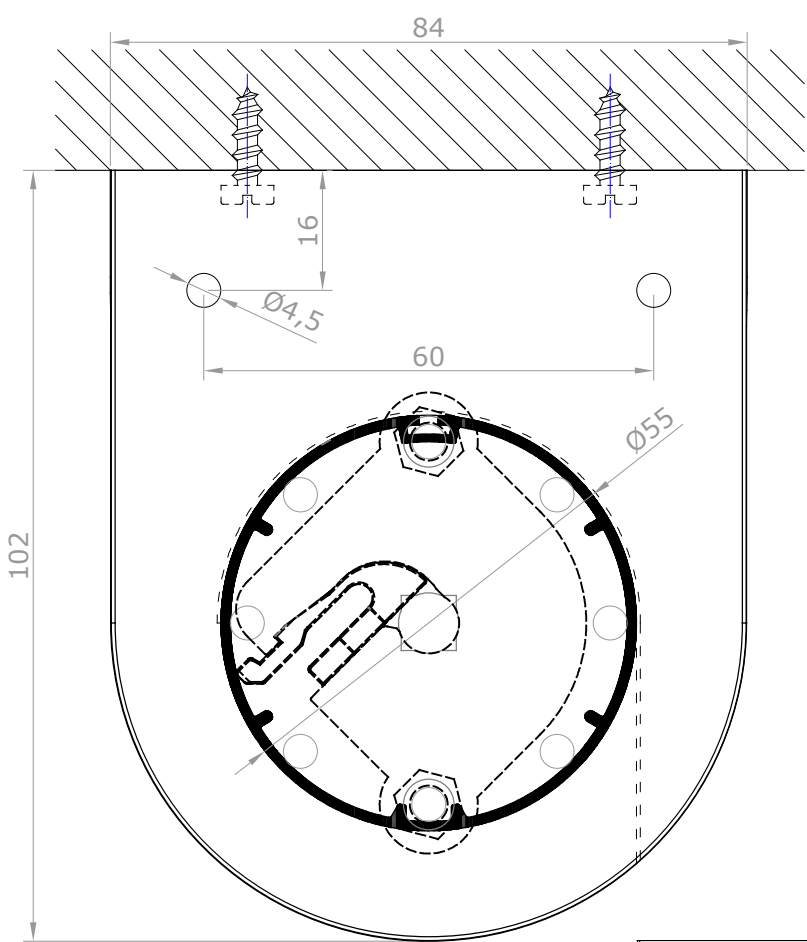
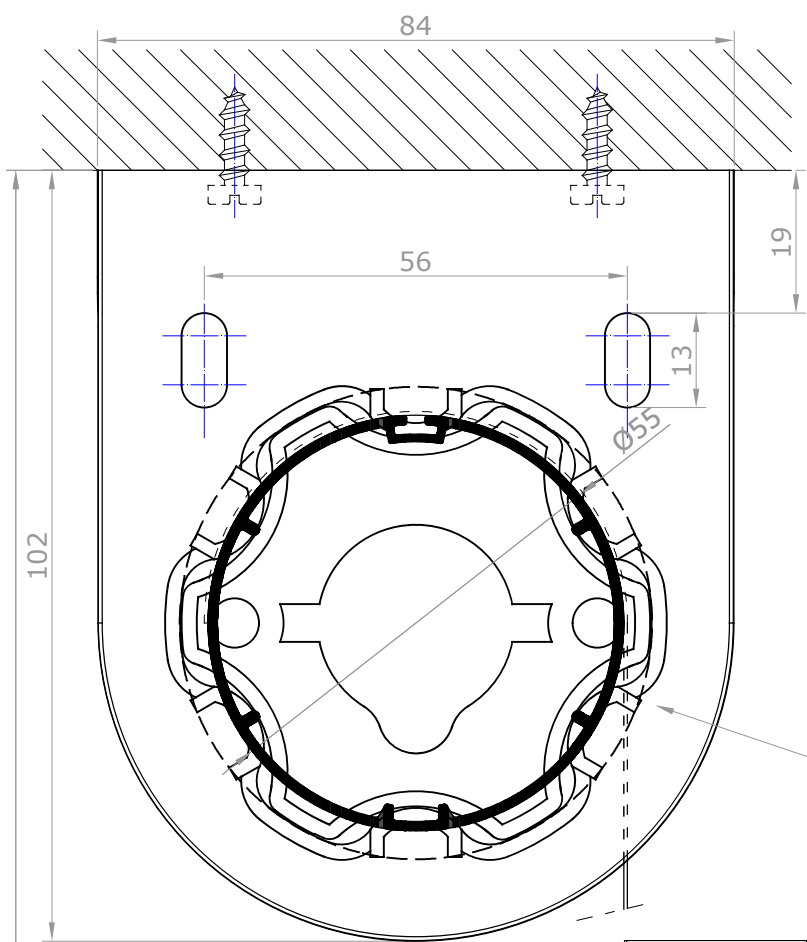


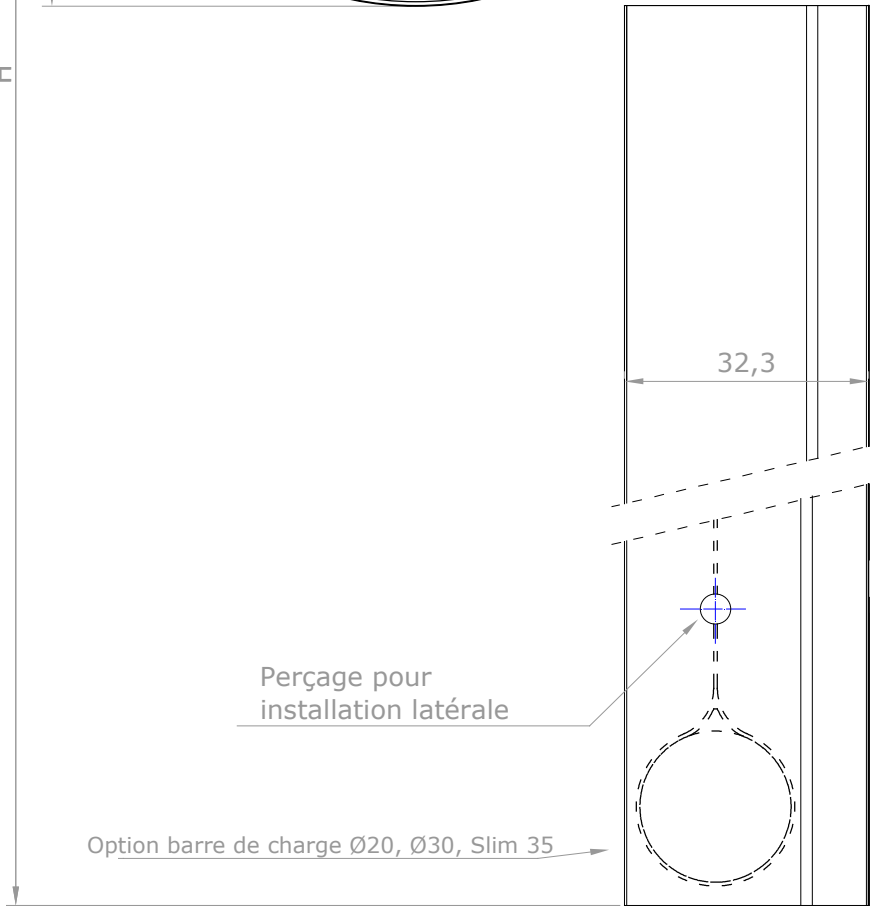
APPUI



CÔTÉ COMMANDES

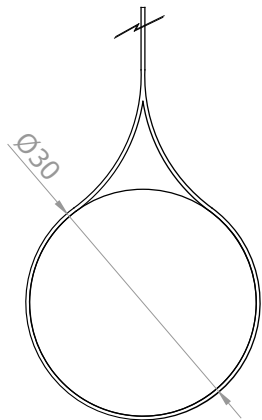


Option
tube Ø55,Ø65

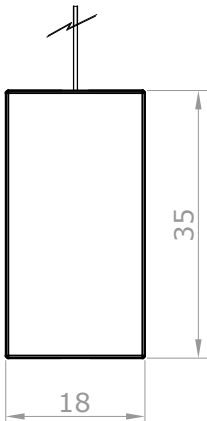


Perçage pour
installation latérale

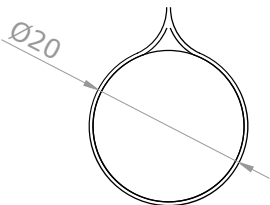
Option barre de charge Ø20, Ø30, Slim 35



Détail 1:1 barre de
charge occulte Ø30



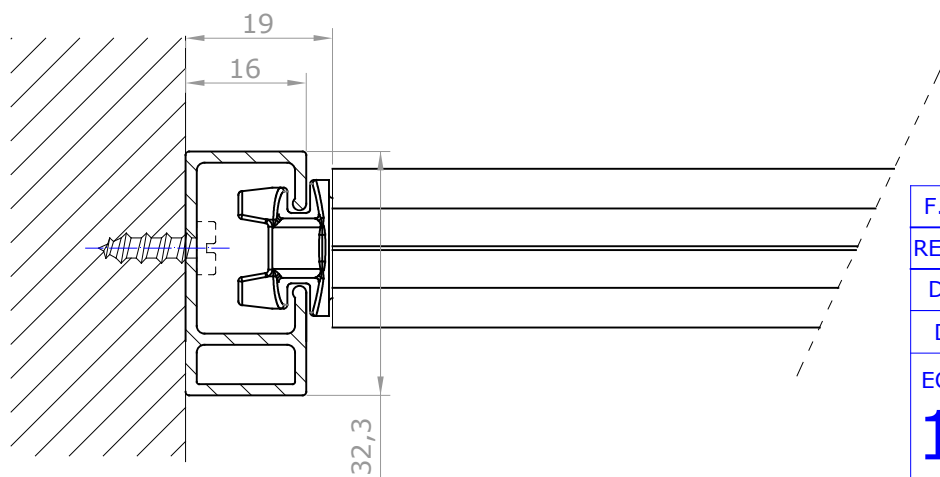
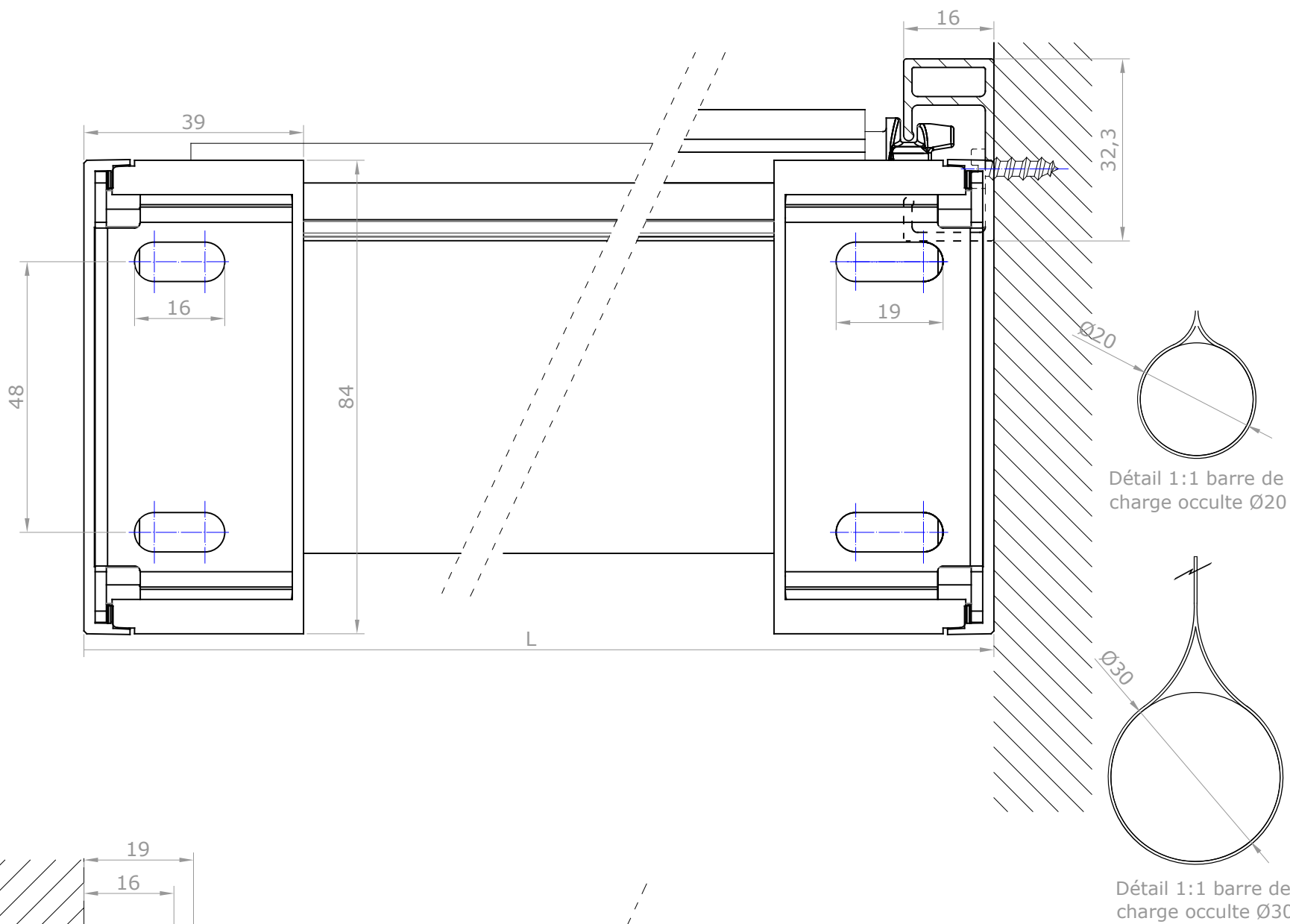
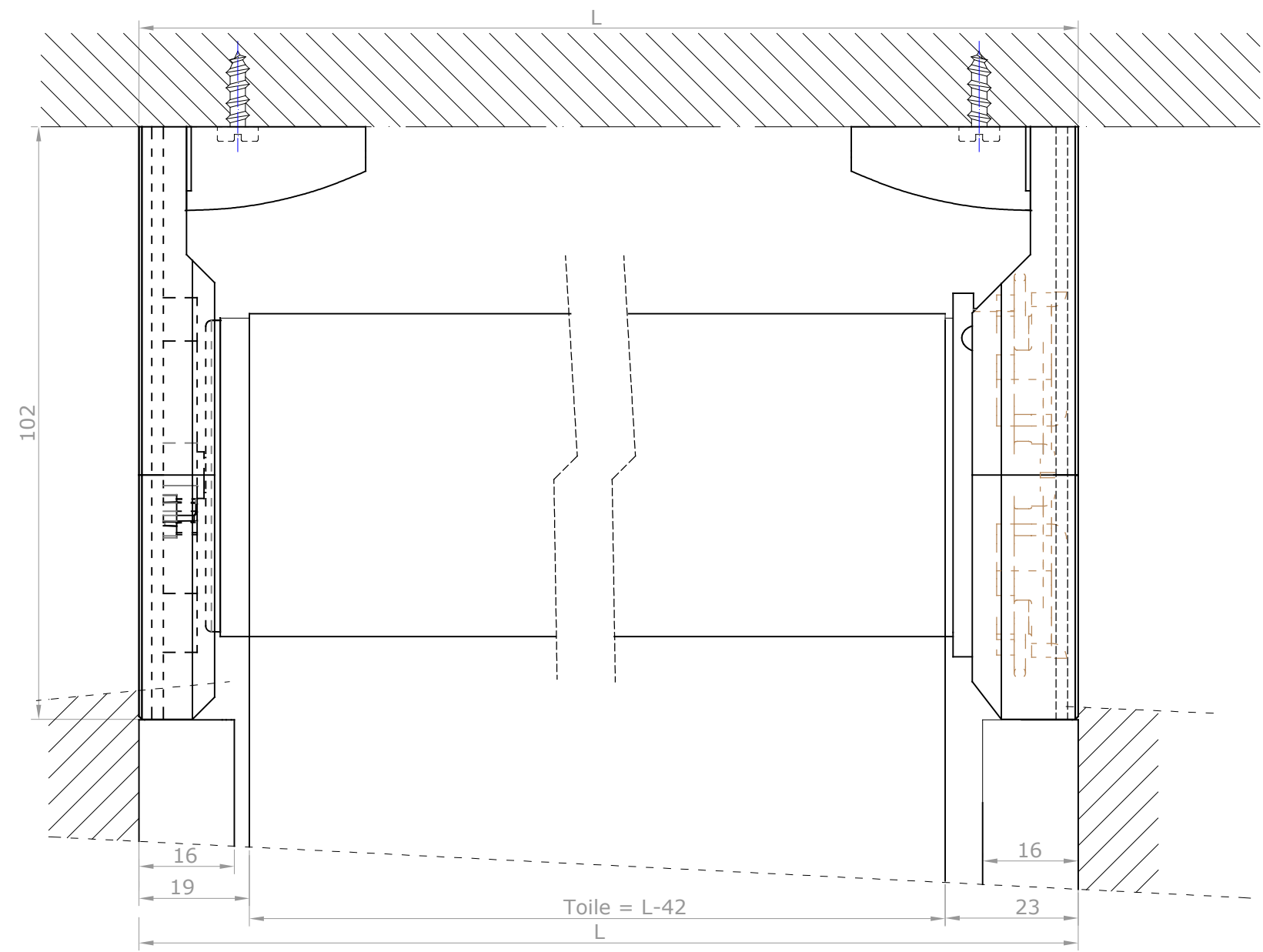
Détail 1:1 barre de
charge apparente Slim 35



Détail 1:1 barre de
charge occulte Ø20

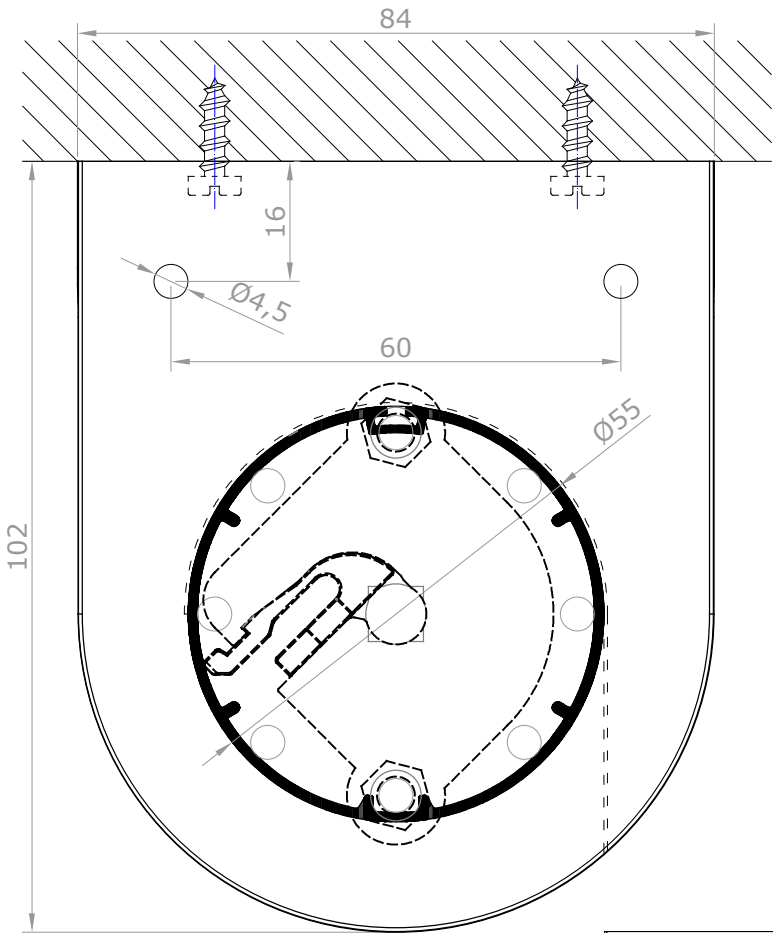
F. REVIS.		BANDALUX	
REVISION	123456789		
DATE	02-02-2018	PLAN N°	
DESSIN	Miquel P.	FORMAT	A-4
ECHELLE	Store enrouleur Premium Plus II moteur coulisses U-301 Installation: pose au plafond, installation latérale Mécanisme: moteur 50 Barre de charge: Occulte de Ø20mm Tube Ø55mm		

1/1

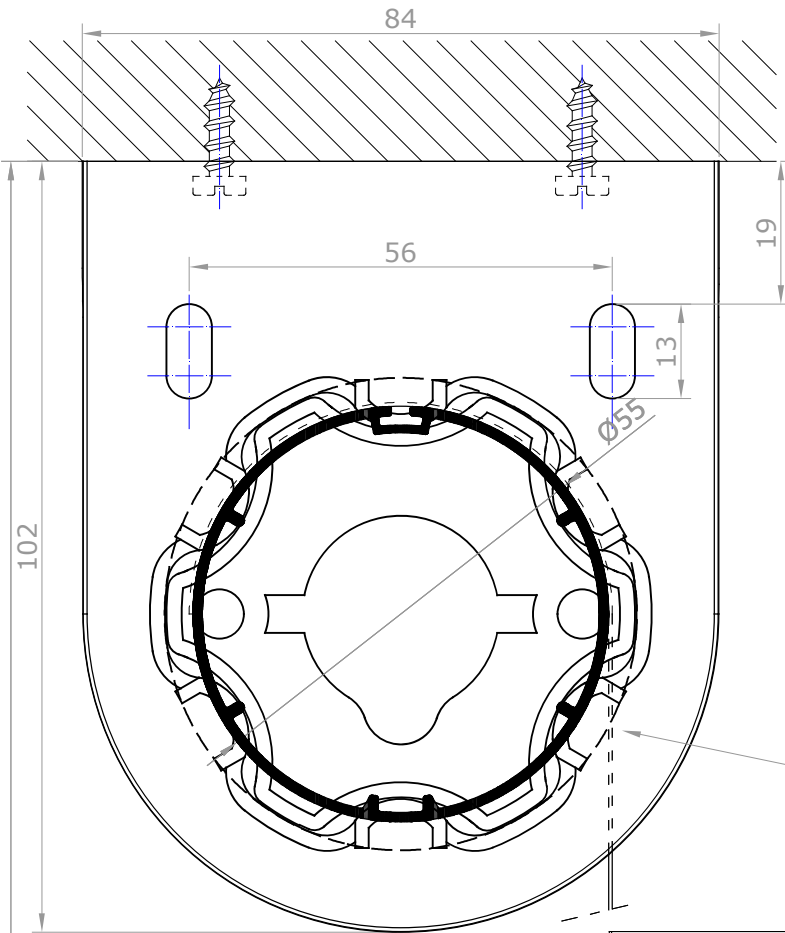


F. REVIS.		BANDALUX	
REVISION	123456789		
DATE	02-02-2018	PLAN N°	
DESSIN	Miquel P.	FORMAT	A-3
ECHELLE	Store enrouleur Premium Plus II moteur coulisses U-301 Installation: pose au plafond, installation latérale Mécanisme: moteur 50 Barre de charge: Occulte de Ø20mm Tube Ø55mm		
1/1			

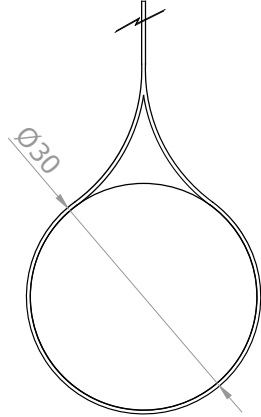
APPUI



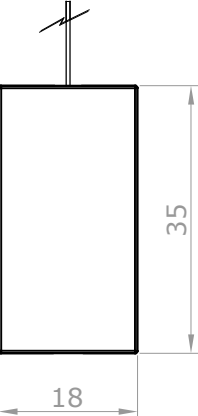
CÔTÉ COMMANDES



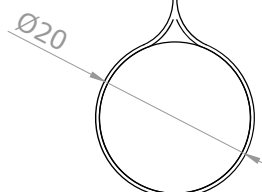
Option
tube Ø55,Ø65



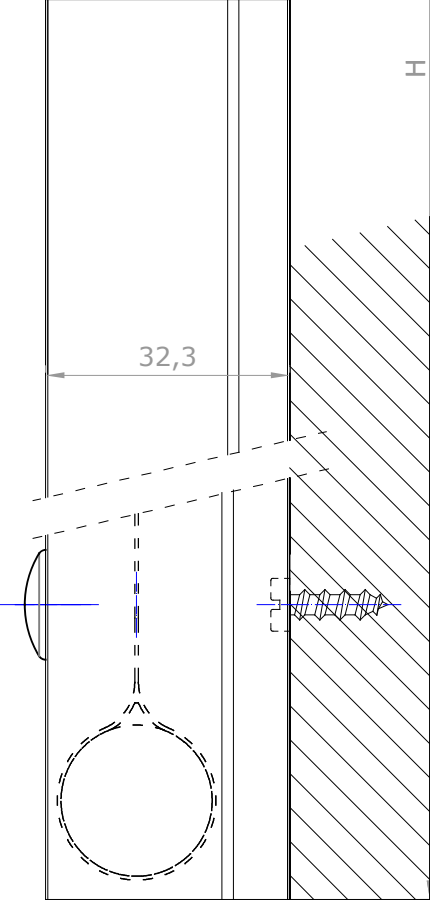
Détail 1:1 barre de charge occulte Ø30



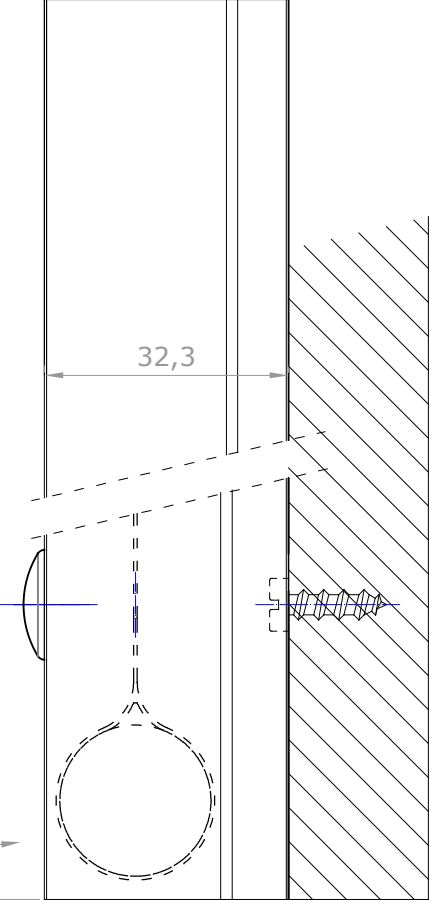
Détail 1:1 barre de charge apparente Slim 35



Détail 1:1 barre de charge occulte Ø20

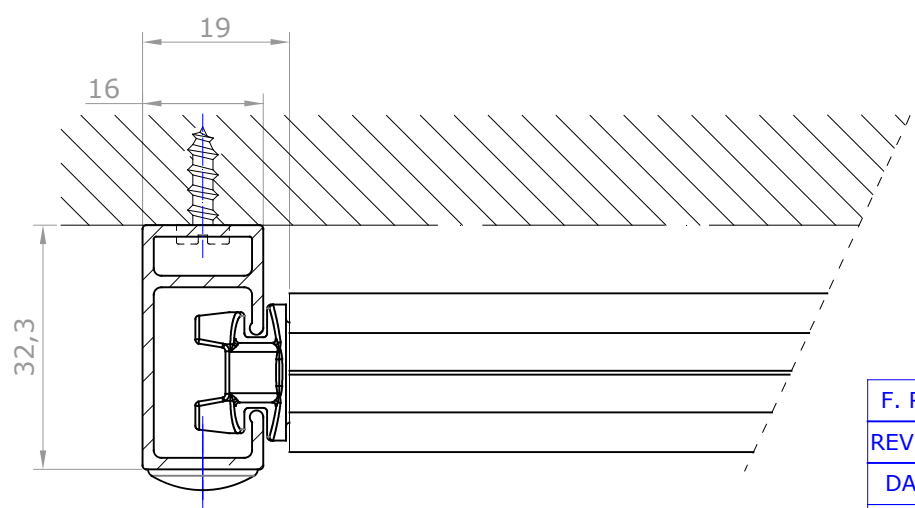
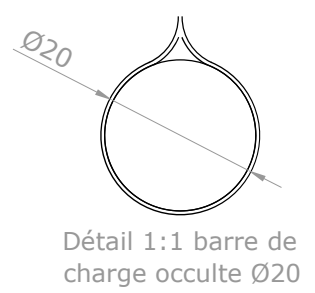
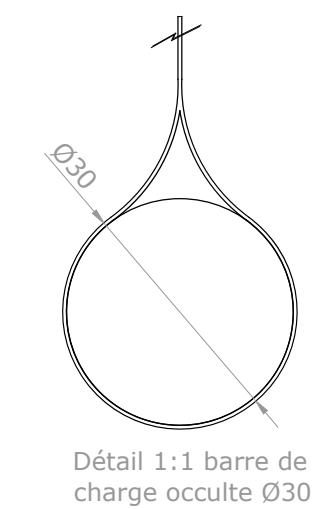
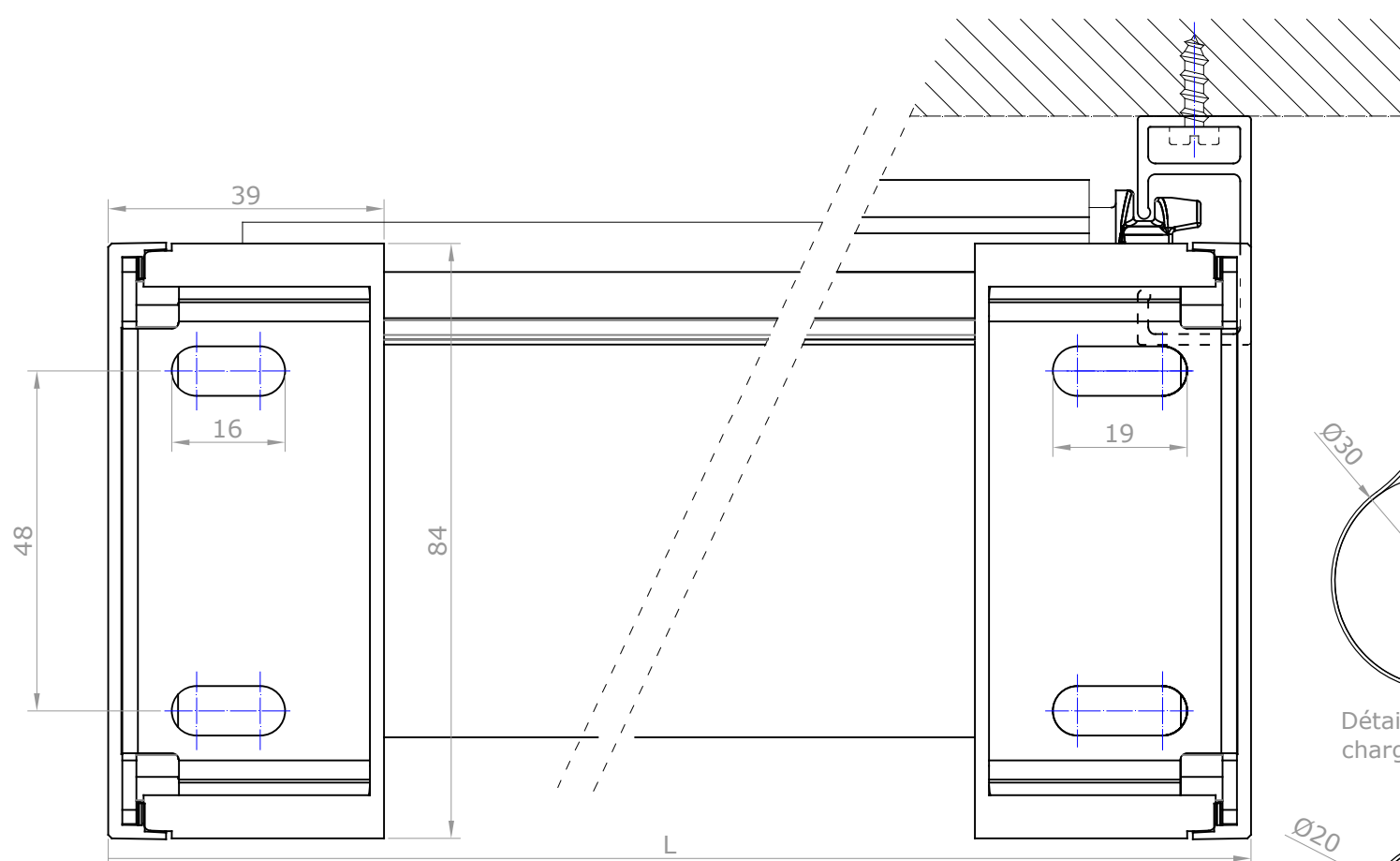
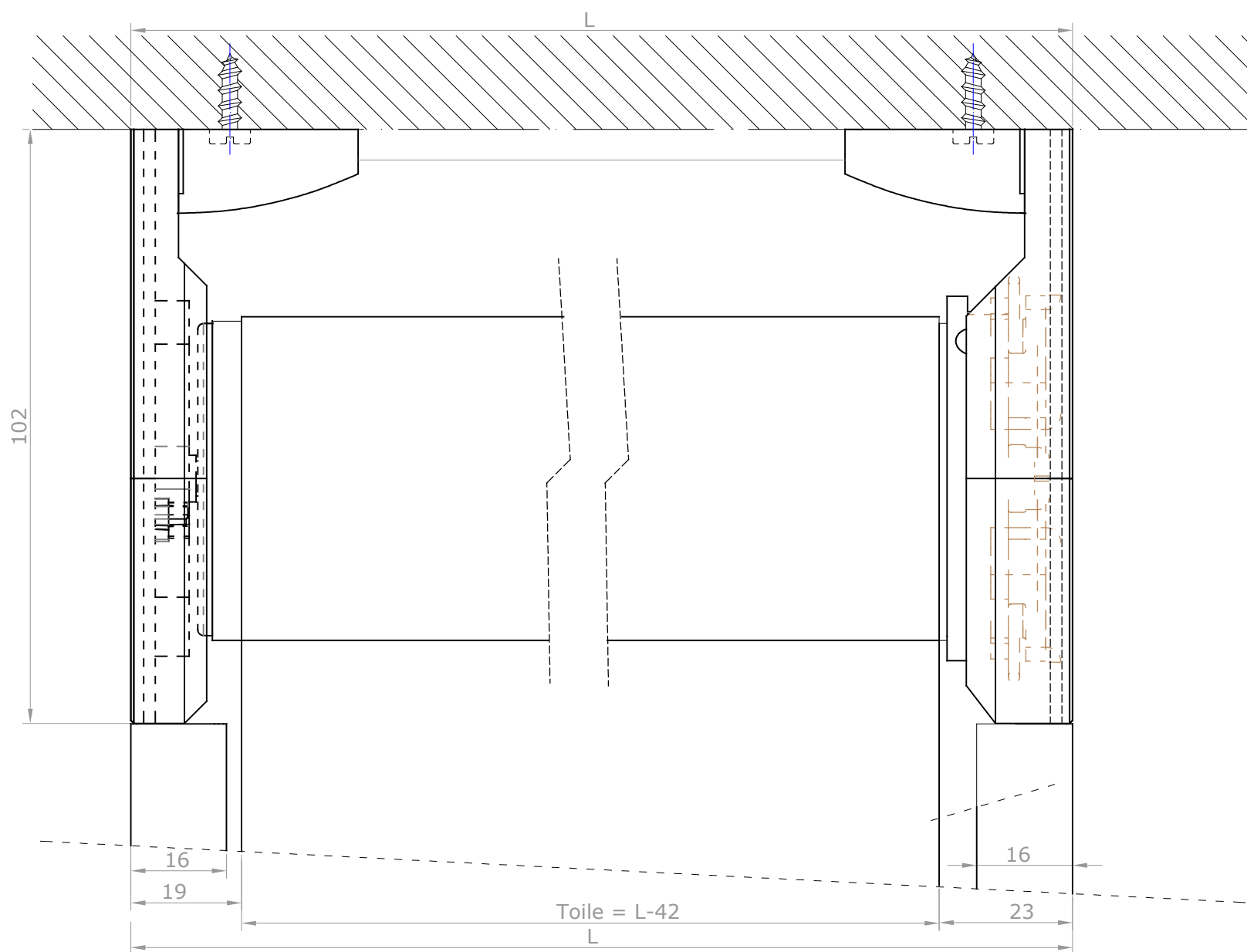


Option barre de charge Ø20, Ø30, Slim 35



F. REVIS.		BANDALUX	
REVISION	1 2 3 4 5 6 7 8 9		
DATE	02-02-2018	PLAN N°	
DESSIN	Miquel P.	FORMAT	A-4
ECHELLE	Store enrouleur Premium Plus II moteur coulisses U-301 Installation: pose au plafond, installation frontale Mécanisme: moteur 50 Barre de charge: Occulte de Ø20mm Tube Ø55mm		

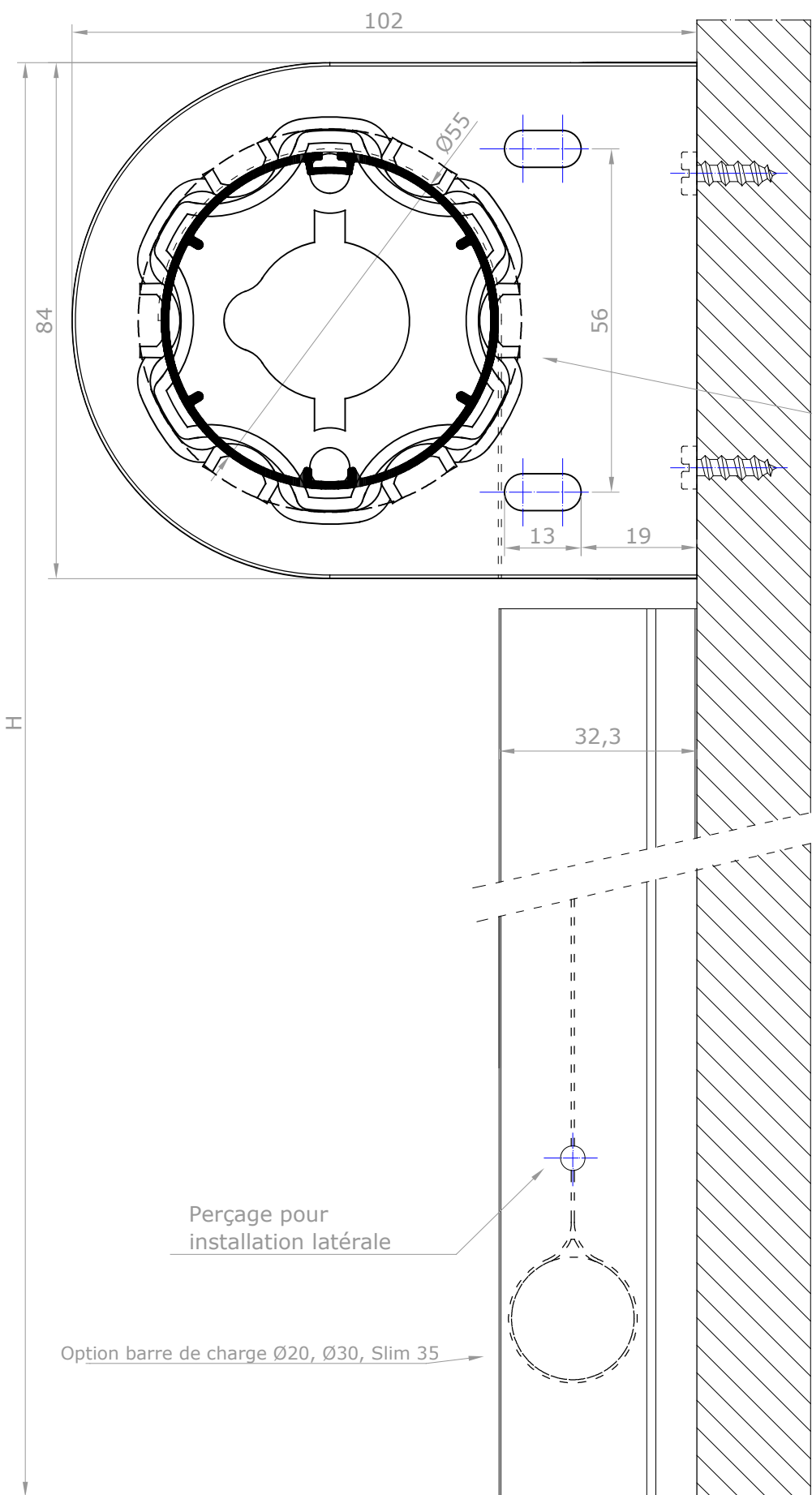
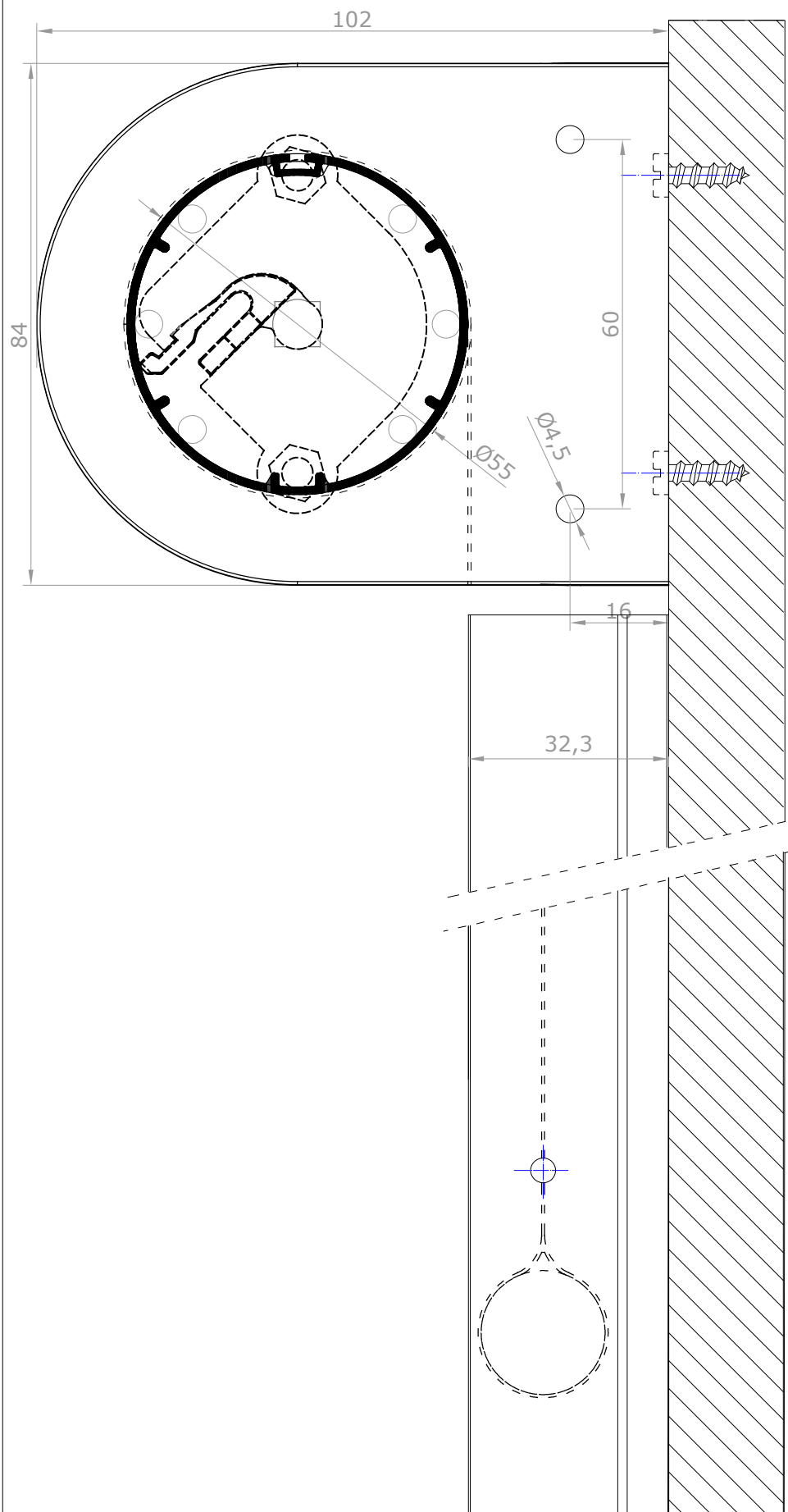
1/1



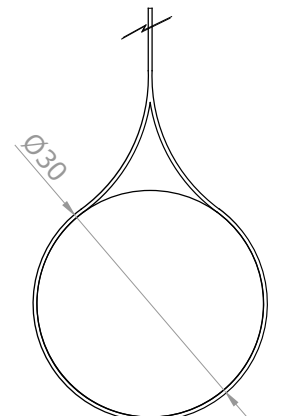
F. REVIS.		BANDALUX	
REVISION	123456789		
DATE	02-02-2018	PLAN N°	
DESSIN	Miquel P.	FORMAT	A-3
ECHELLE	Store enrouleur Premium Plus II moteur coulisses U-301 Installation: pose au plafond, installation frontale Mécanisme: moteur 50 Barre de charge: Occulte de Ø20mm Tube Ø55mm		
1/1			

APPUI

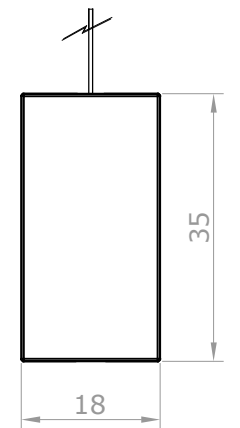
CÔTÉ COMMANDES



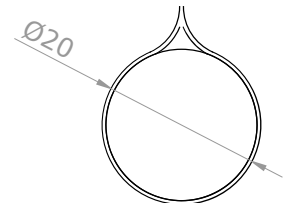
Option
tube Ø55,Ø65



Détail 1:1 barre de charge occulte Ø30



Détail 1:1 barre de charge apparente Slim 35

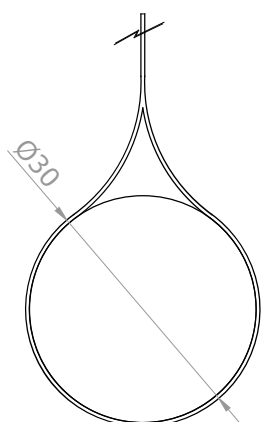
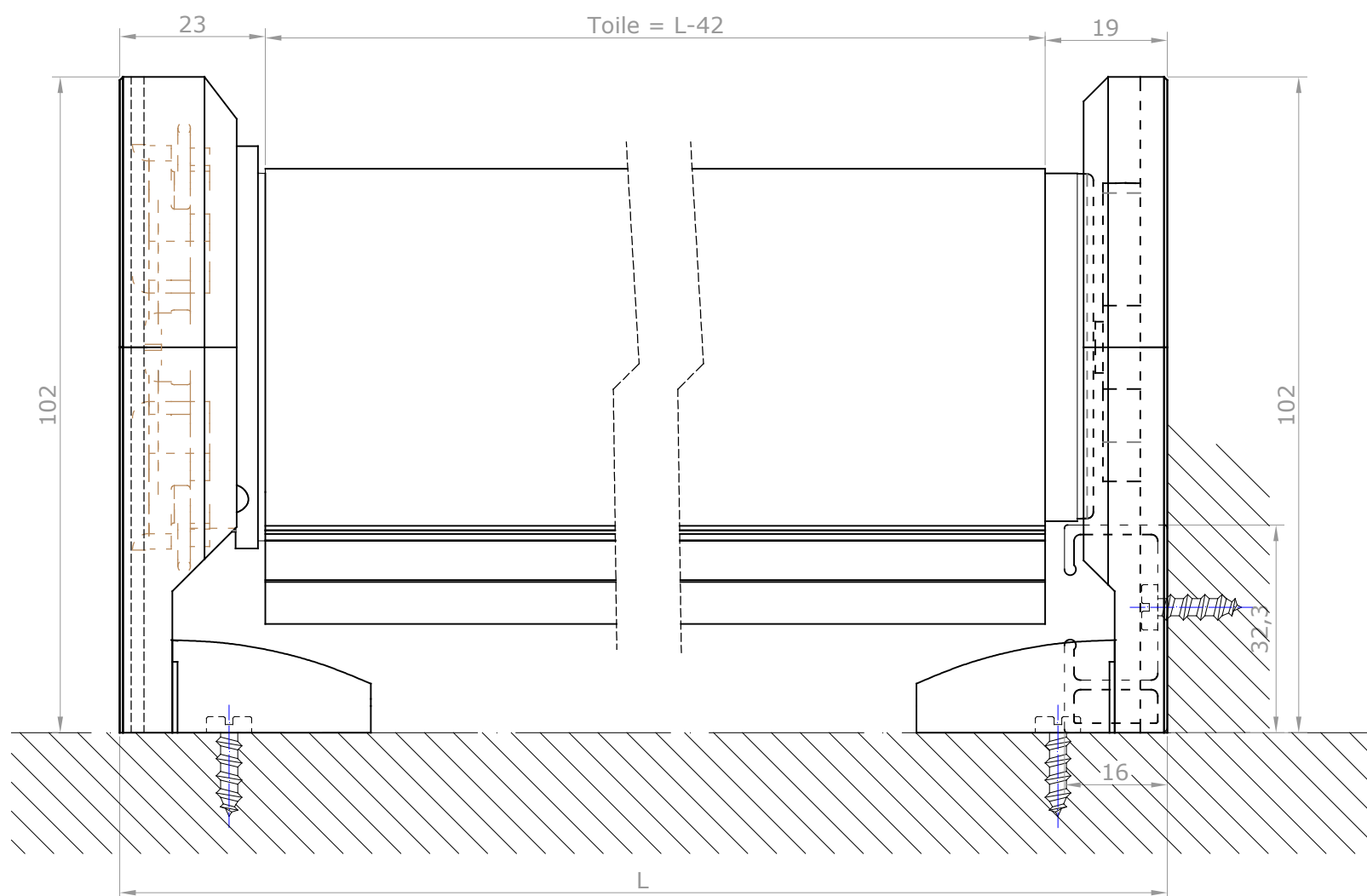
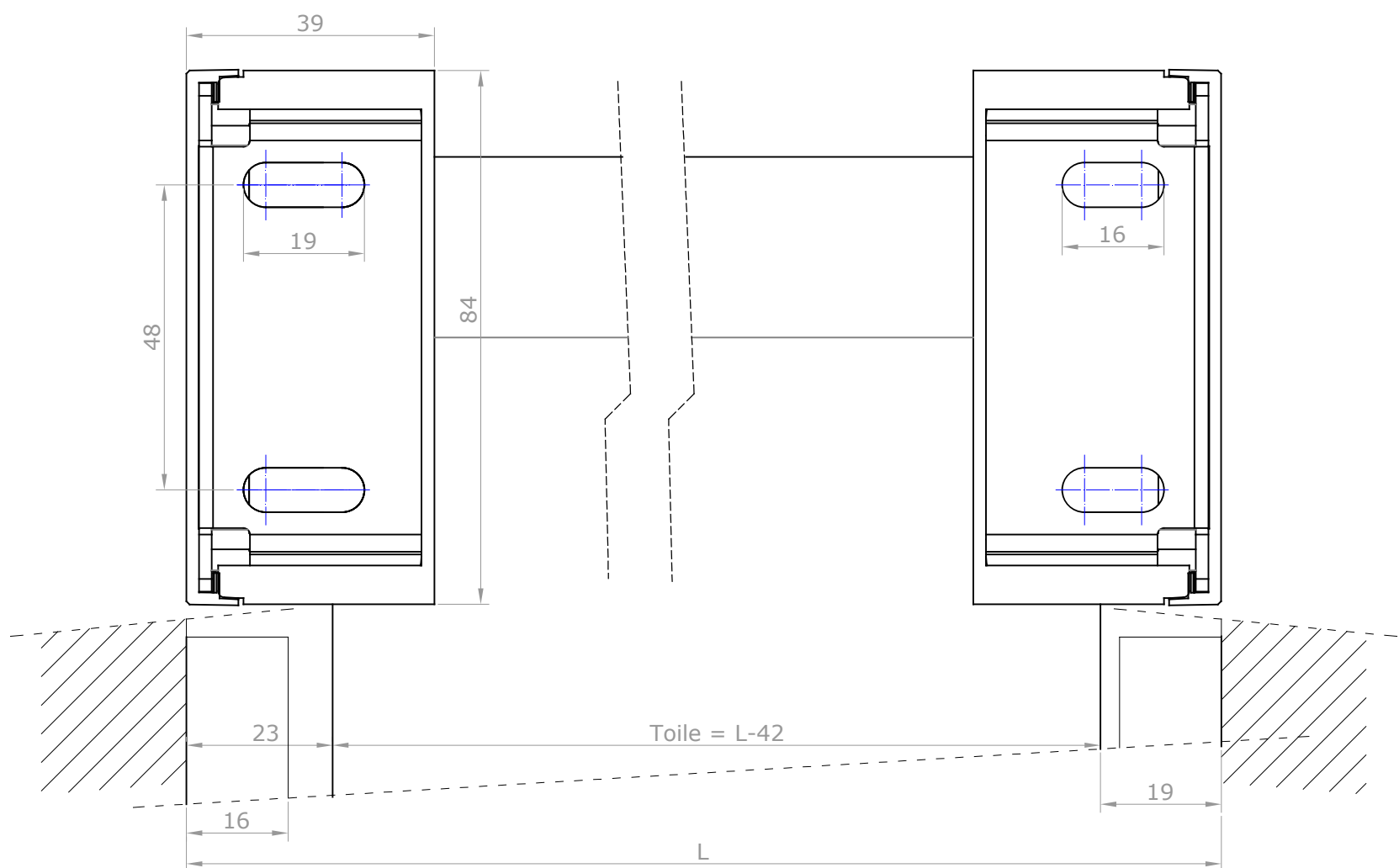


Détail 1:1 barre de charge occulte Ø20

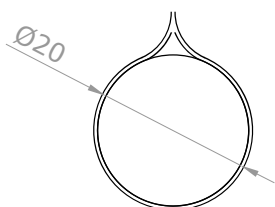
Perçage pour
installation latérale

Option barre de charge Ø20, Ø30, Slim 35

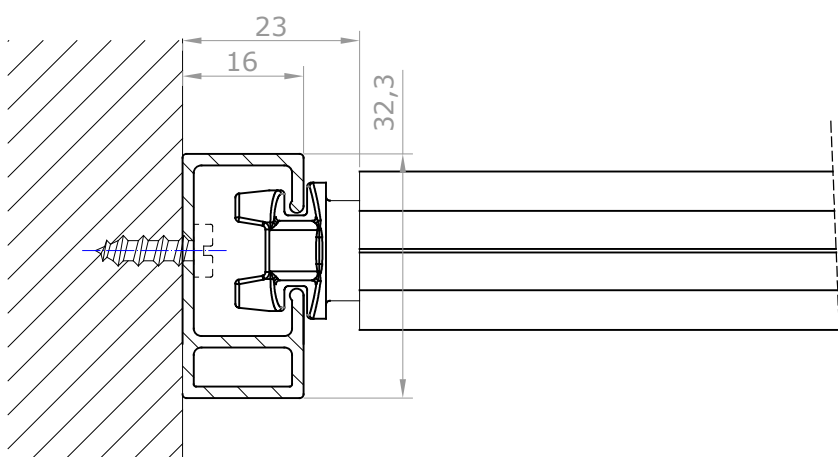
F. REVIS.		BANDALUX	
REVISION	1 2 3 4 5 6 7 8 9		
DATE	02-02-2018	PLAN N°	
DESSIN	Miquel P.	FORMAT	A-4
ECHELLE	Store enrouleur Premium Plus II moteur coulisses U-301 Installation: pose en façade, installation latérale Mécanisme: moteur 50 Barre de charge: Occulte de Ø20mm Tube Ø55mm		
1/1			



Détail 1:1 barre de charge occulte Ø30

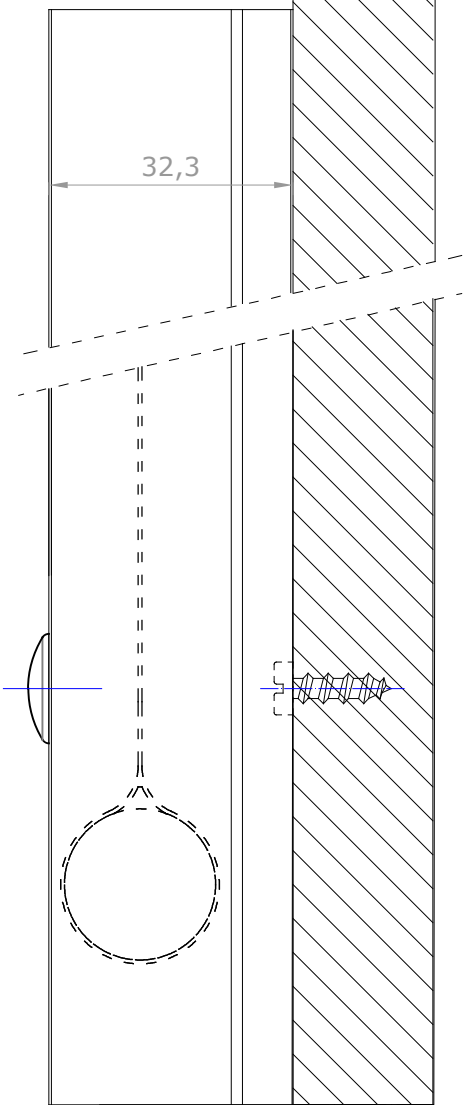
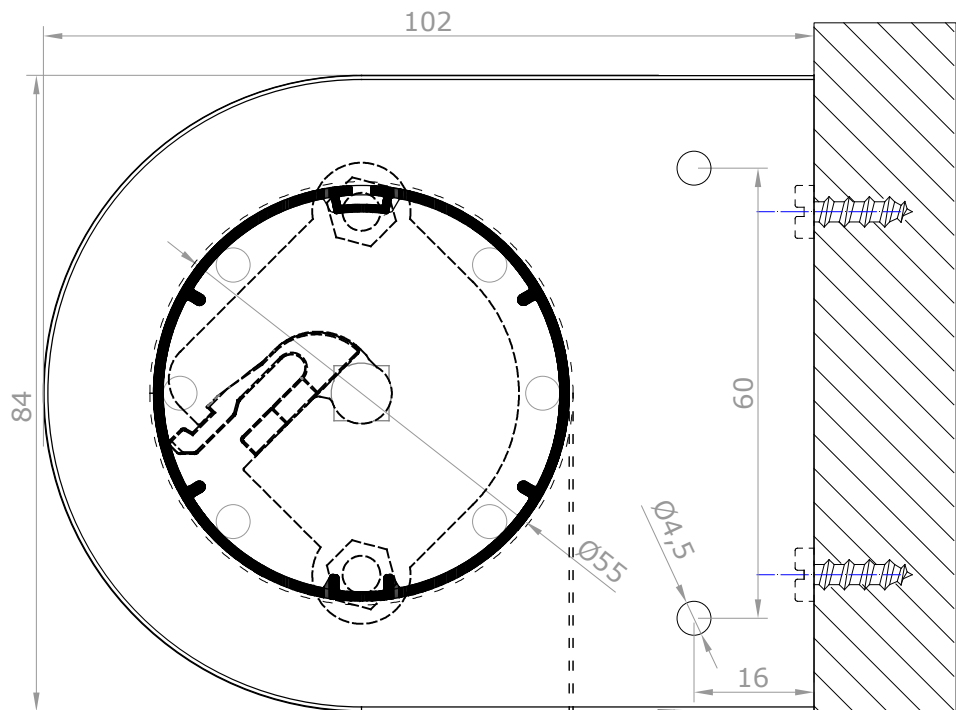


Détail 1:1 barre de charge occulte Ø20

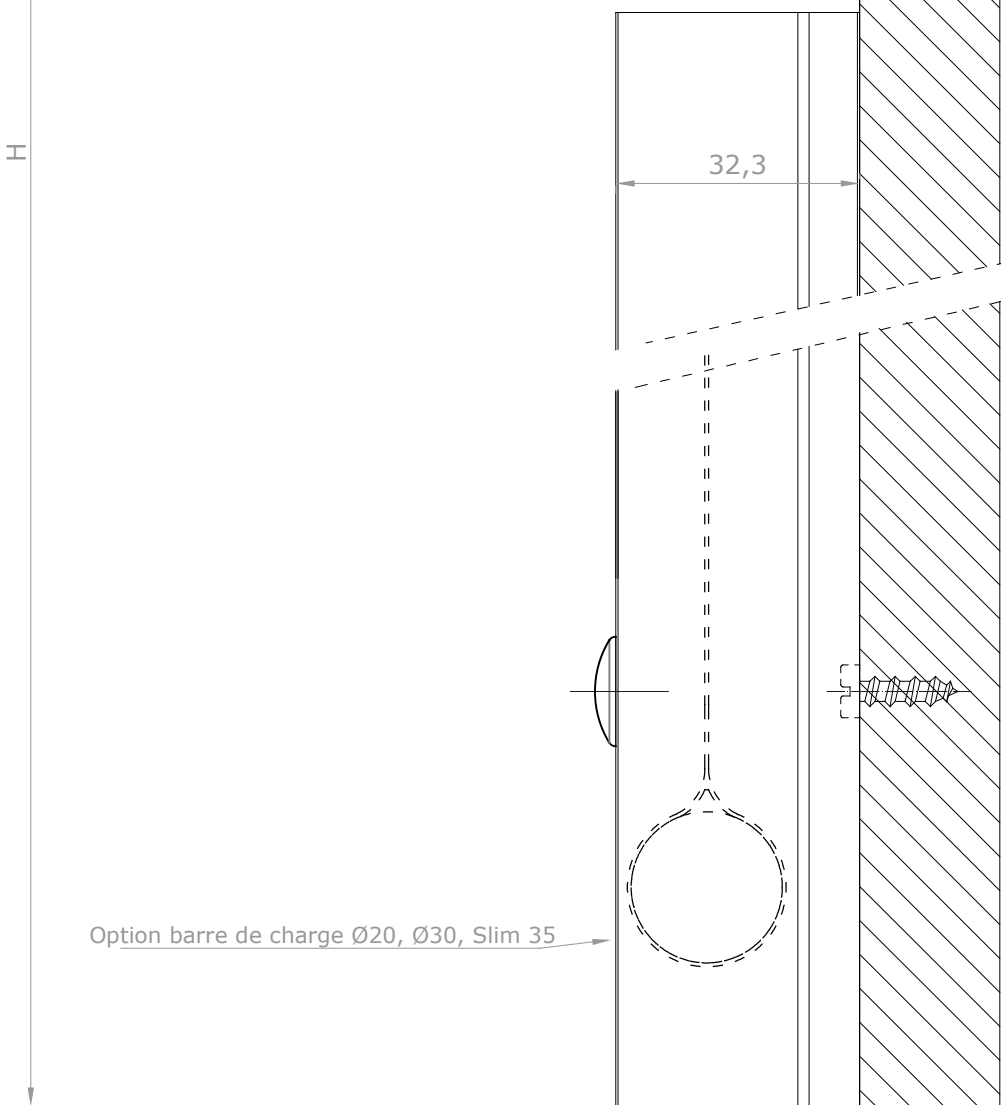
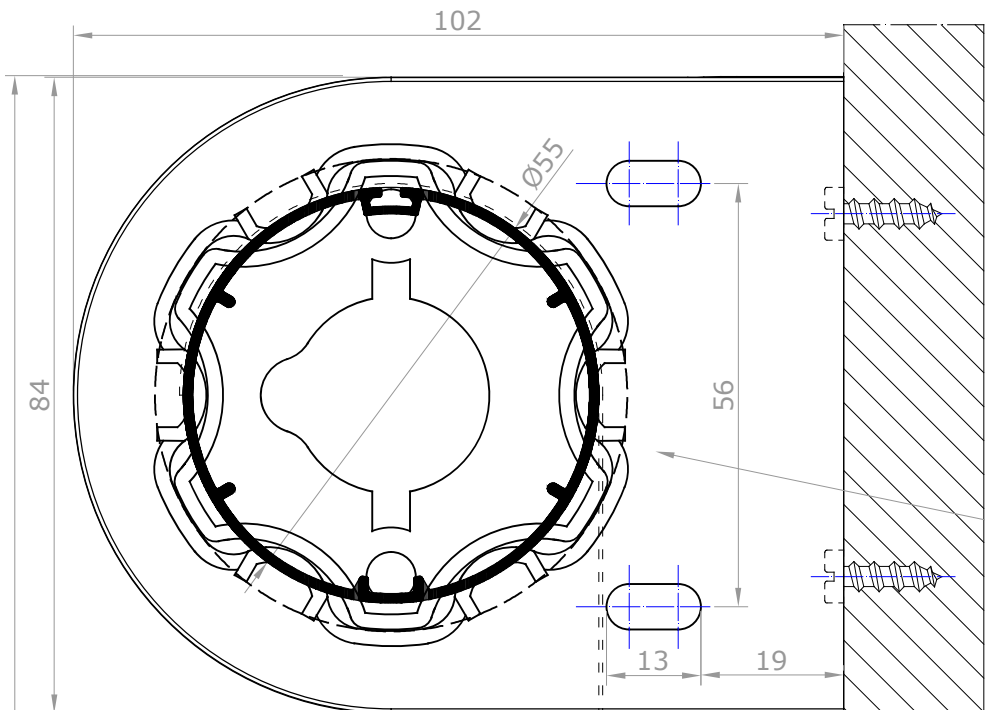


F. REVIS.		BANDALUX	
REVISION	123456789		
DATE	02-02-2018	PLAN N°	
DESSIN	Miquel P.	FORMAT	A-3
ECHELLE	Store enrouleur Premium Plus II moteur coulisses U-301 Installation: pose en façade, installation latérale Mécanisme: moteur 50 Barre de charge: Occulte de Ø20mm Tube Ø55mm		
	1/1		

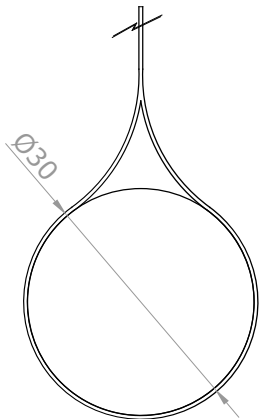
APPUI



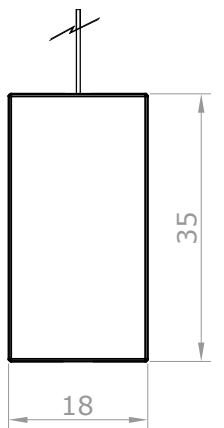
CÔTÉ COMMANDES



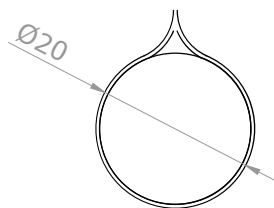
Option
tube Ø55,Ø65



Détail 1:1 barre de charge occulte Ø30



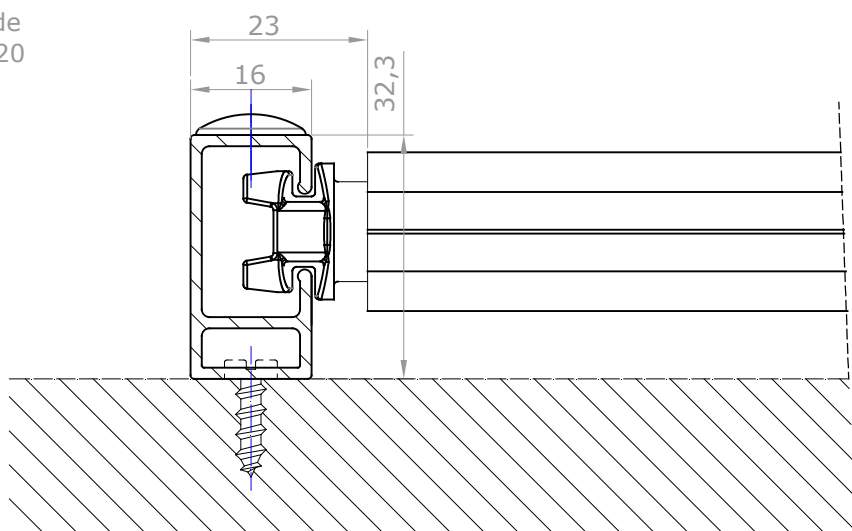
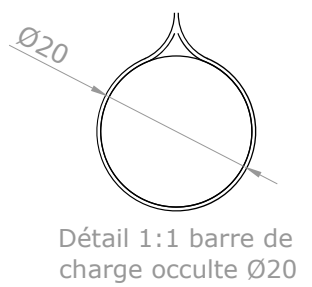
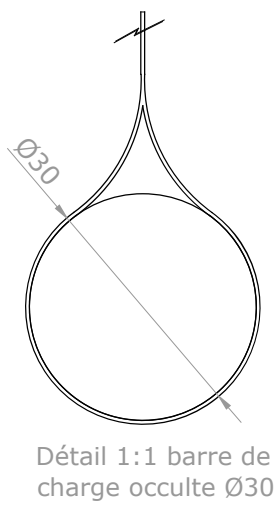
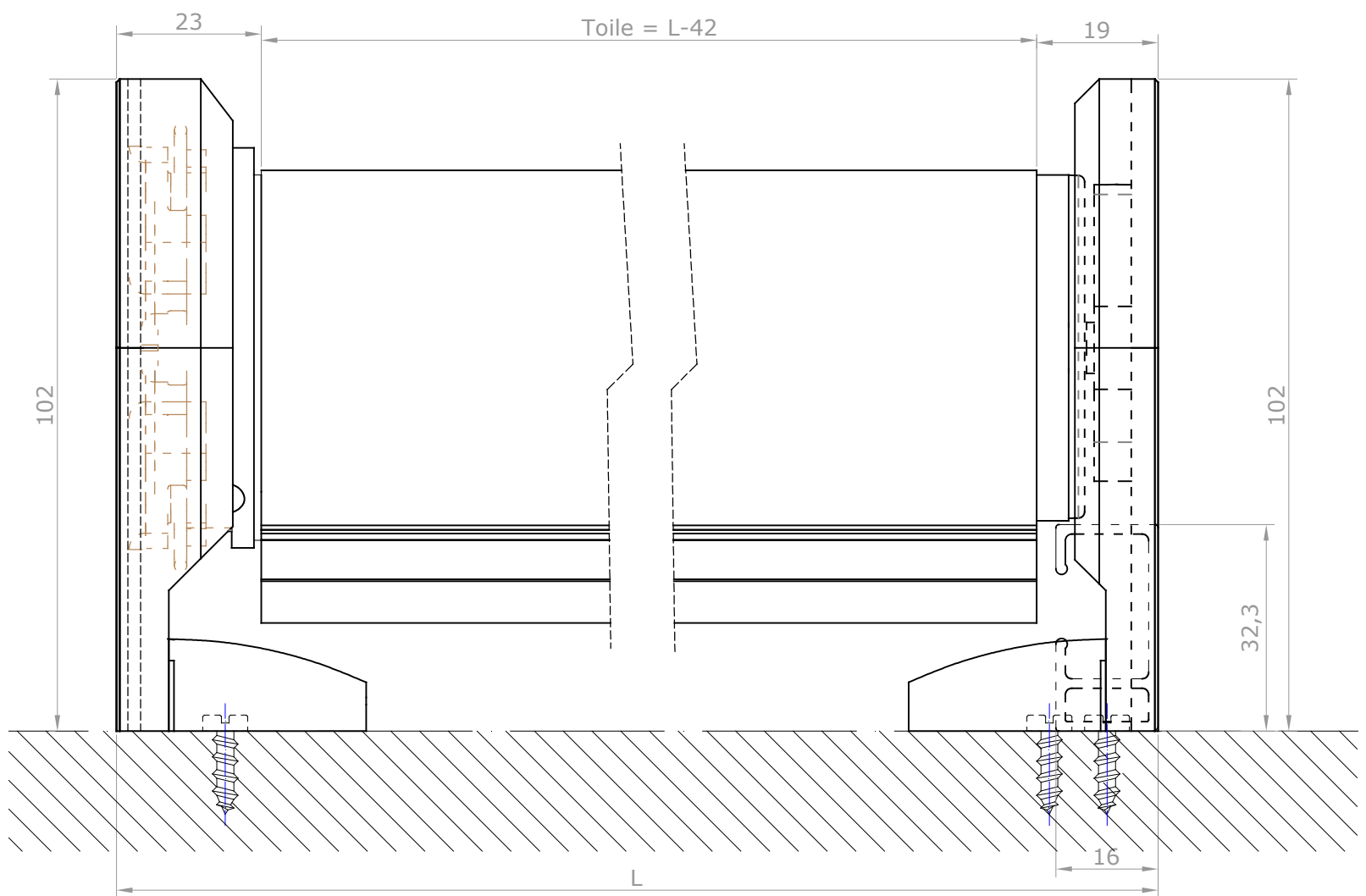
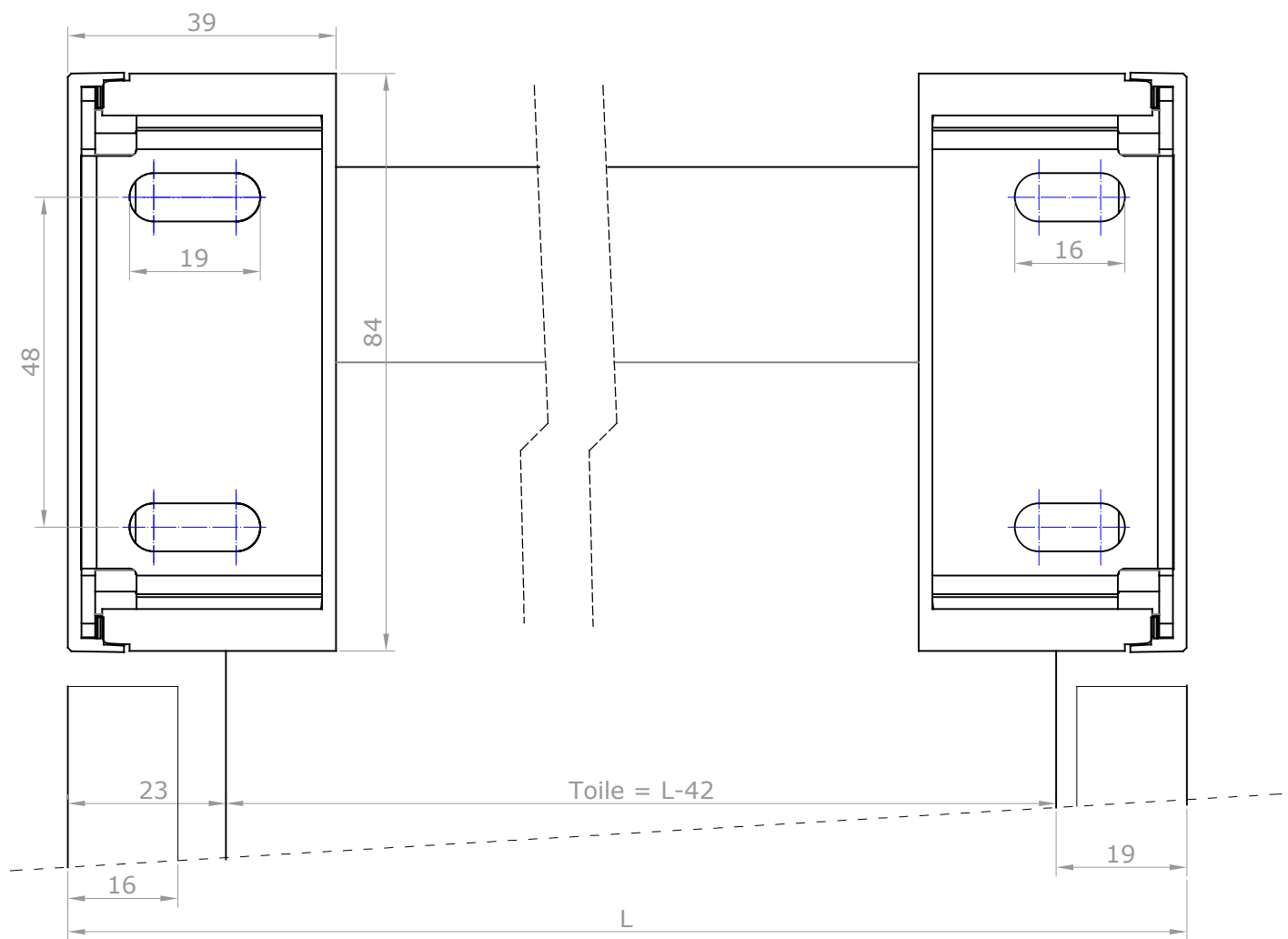
Détail 1:1 barre de charge apparente Slim 35



Détail 1:1 barre de charge occulte Ø20

Option barre de charge Ø20, Ø30, Slim 35

F. REVIS.		BANDALUX	
REVISION	123456789		
DATE	02-02-2018	PLAN N°	
DESSIN	Miquel P.	FORMAT	A-4
ECHELLE	Store enrouleur Premium Plus II moteur coulisses U-301 Installation: pose en façade, installation frontale Mécanisme: moteur 50 Barre de charge: Occulte de Ø20mm Tube Ø55mm		
1/1			



F. REVIS.		BANDALUX	
REVISION	123456789		
DATE	02-02-2018	PLAN N°	
DESSIN	Miquel P.	FORMAT	A-3
ECHELLE	Store enrouleur Premium Plus II moteur coulisses U-301 Installation: pose en façade, installation frontale Mécanisme: moteur 50 Barre de charge: Occulte de Ø20mm Tube Ø55mm		
1/1			